

# RAMOS<sup>®</sup>

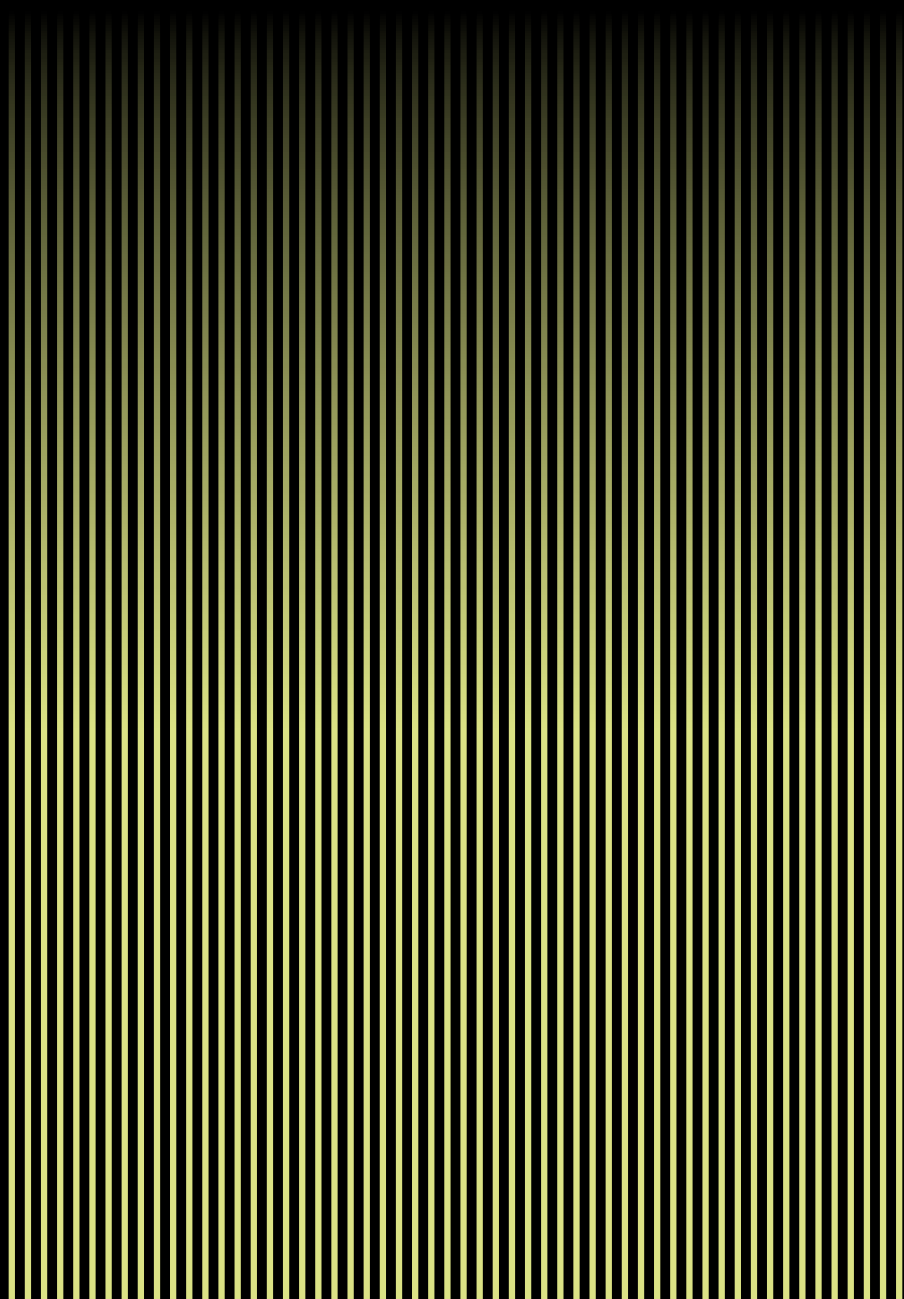
---

ENHANCING TOMORROW

MAKE LUXURY A **PRIME FASCINATION**



**ARTISTIC COLLECTION | 300X600mm**



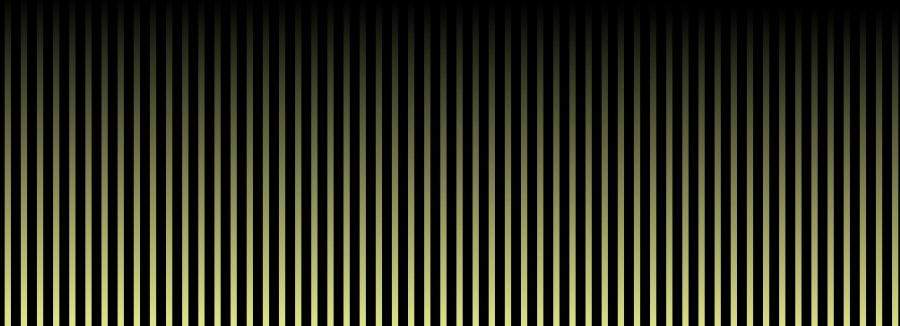
# RAMOS®

---

ENHANCING TOMORROW



Ramos Ceramic is one of the proud prodigies of The Kaveri Group- a reputed ceramic manufacturing group, coming from Morbi. The group has been in existence since 1995, and it was also amongst the first few manufacturing units of India. With such a regal lineage on its shoulder, Ramos was brought to life to address the niche segment of the market. Under this venture, the group develops unique and luxurious wall tiles having an exclusive portrayal of the fancy and magnificent design framework. Ramos Ceramic has the largest and most modern digital wall tile manufacturing plant in Morbi, Gujarat, India where state of the art technology is employed to deliver pioneering products to the domestic and export market. The brand offers a plethora of tile options to spoil you for choice. With a comprehensive product palette, Ramos has become the flagbearer of class in the industry. It has indeed carved out a peculiar status through glorious manufacturing, modern and excellent products.



# RAMOS®

— ENHANCING TOMORROW



## ARTISTIC COLLECTION

### 300x600mm



Explore Your Inner Artistic Potential With These Phenomenally Crafted Tiles. Made To Fascinate, These Arbitrary Tiles Will Become Your Dearest Muse., These Tiles Will Set A Comfy Ambience You Can Never Get Rid Of. Eccentric And Exquisite Patterns Are Here To Hold Your Gaze. These Tiles Are Crafted With A Meticulous Narration Of Skilful Craftsmanship To Hold Your Blink.

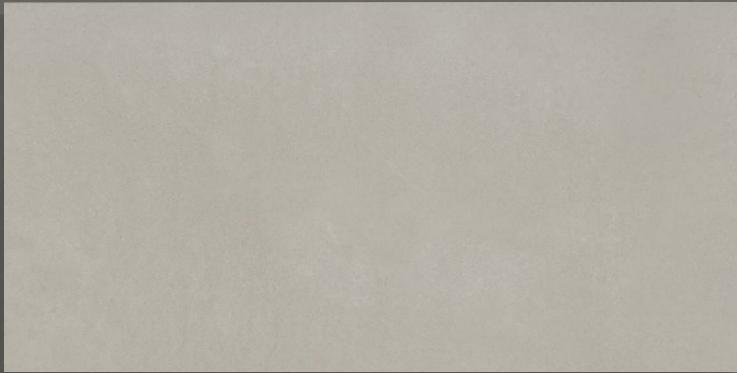


[www.ramos.in](http://www.ramos.in)

**SI0121**



**HL**



**DK**

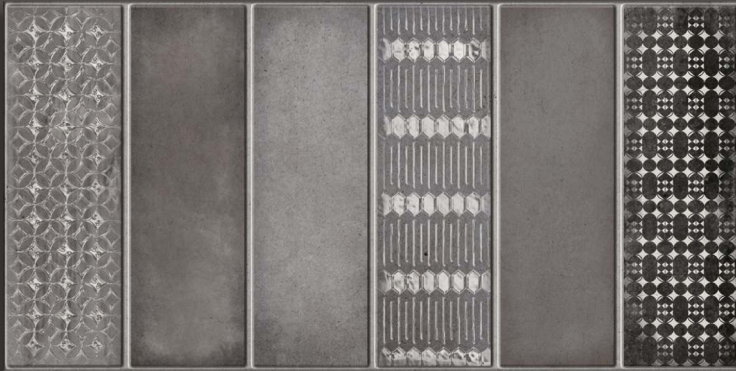
—  
**300X600mm**



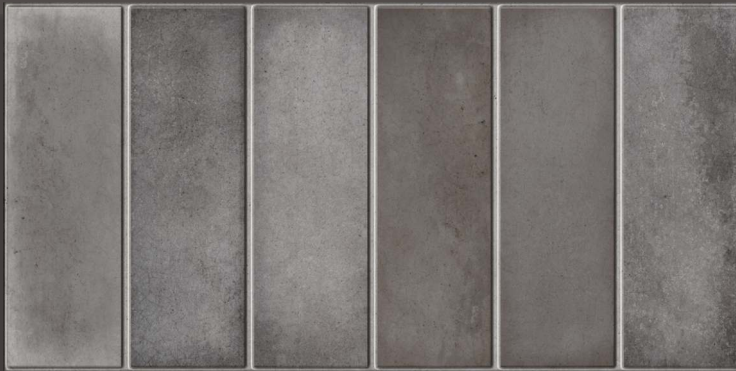
# RAMOS®

— ENHANCING TOMORROW

SI0129



HL



DK

300X600mm



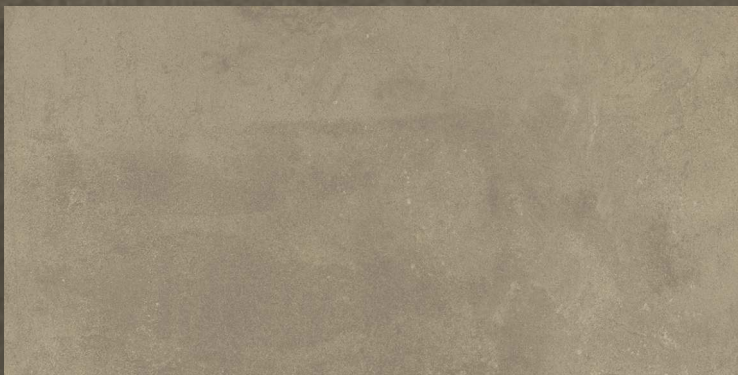
SI0130



LT



HL



DK

300X600mm





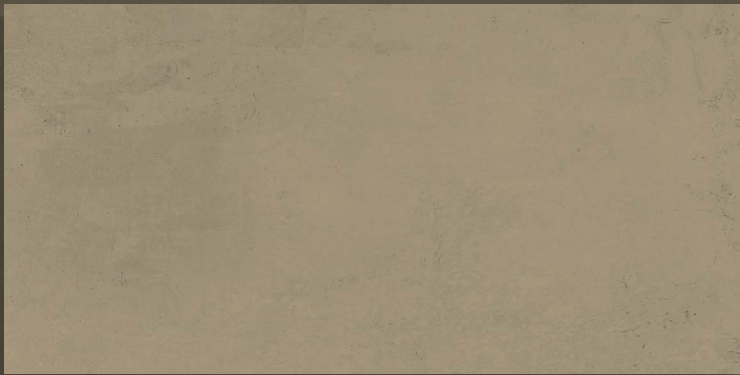
# RAMOS®

— ENHANCING TOMORROW

SI0142



HL



DK

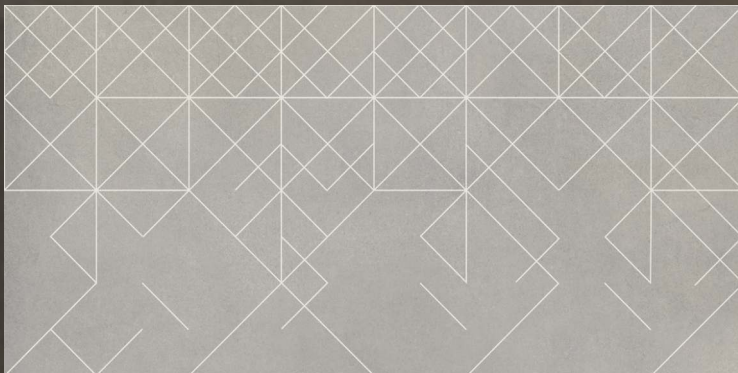
—  
300X600mm



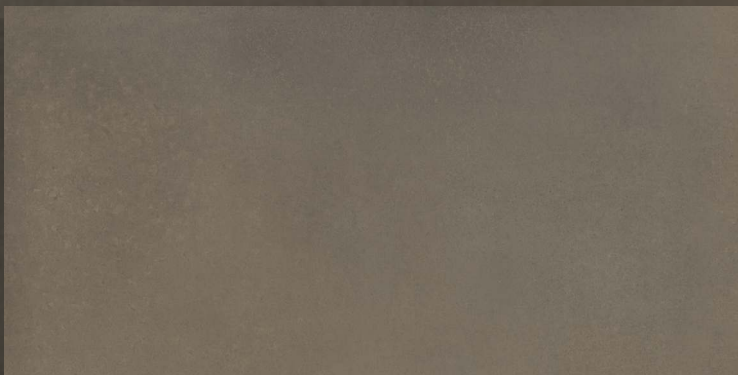
SI0197



LT



HL



DK

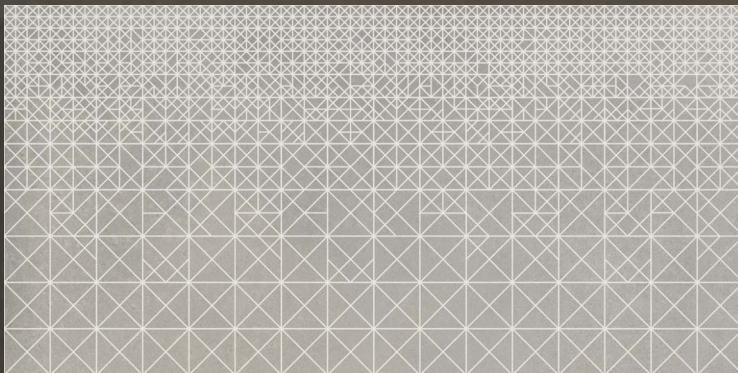
300X600mm



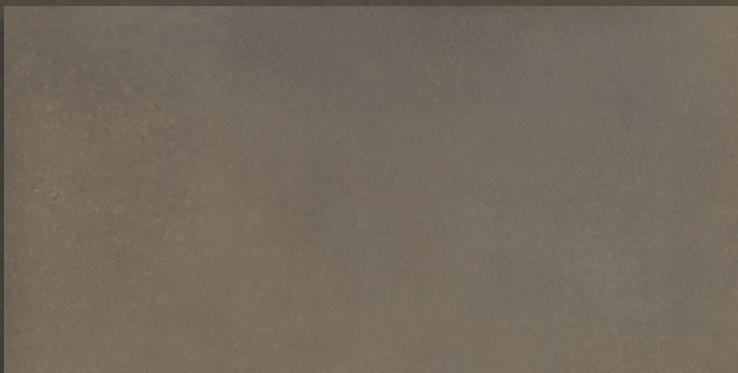
**SI0197**



**LT**



**HL02**



**DK**

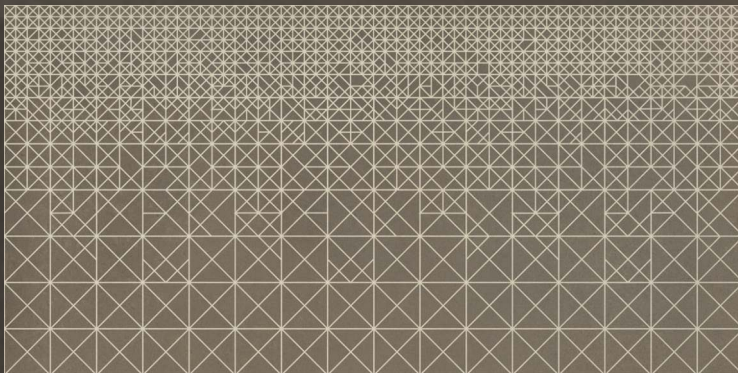
**300X600mm**



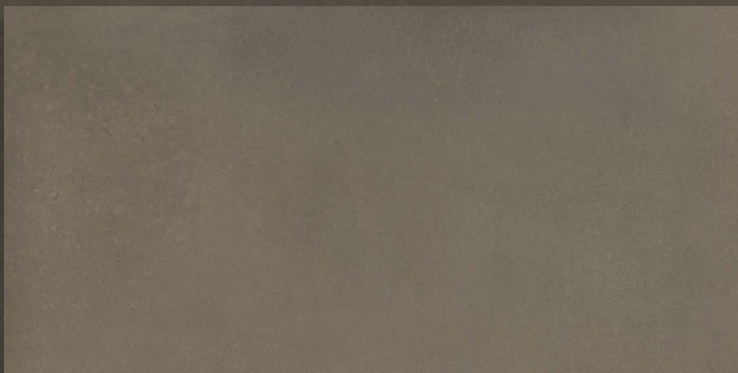
SI0197



LT



HL03



DK

300X600mm





# RAMOS®

ENHANCING TOMORROW

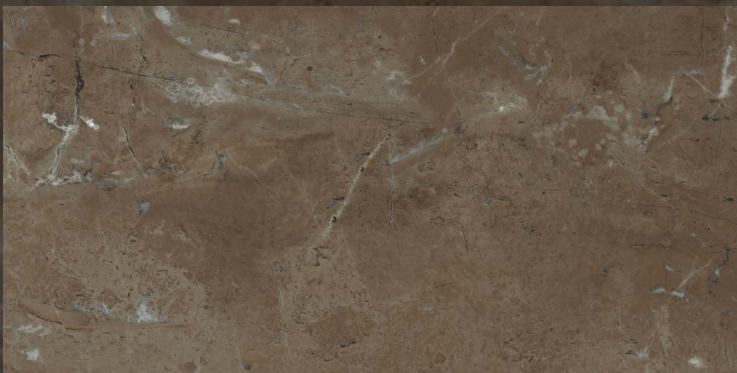
SI0205



LT



HL



DK

300X600mm

[www.amos.in](http://www.amos.in)



**SI0218**



**LT**



**HL**



**DK**

**300X600mm**



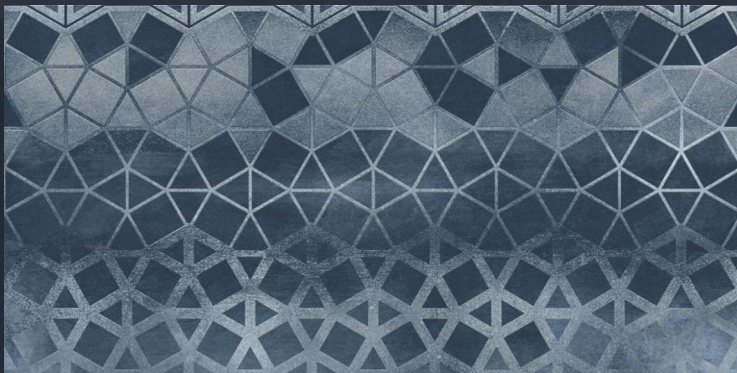
# RAMOS®

— ENHANCING TOMORROW

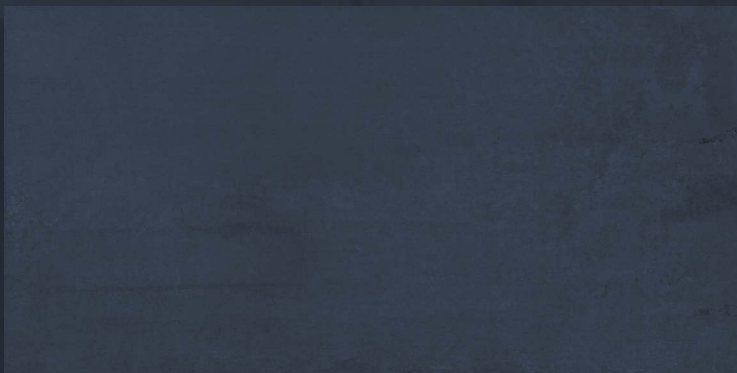
**SI0219**



**LT**



**HL**



**DK**

**300X600mm**

[www.amos.in](http://www.amos.in)



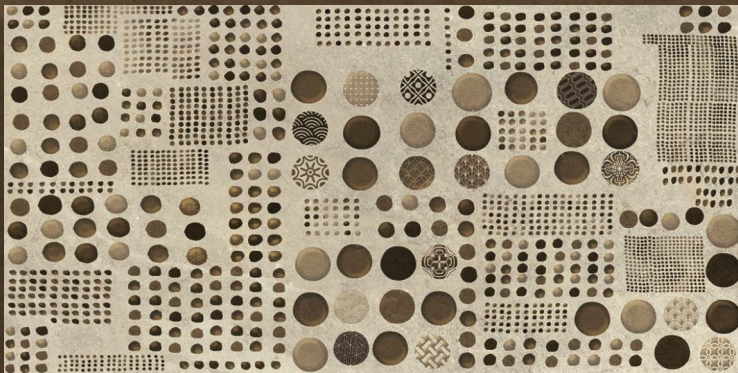
# RAMOS®

— ENHANCING TOMORROW

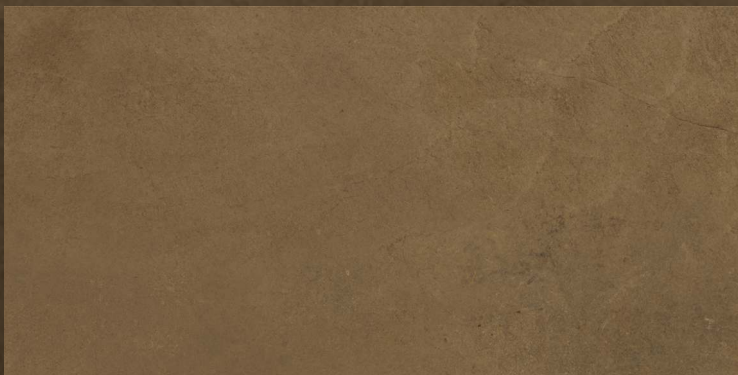
**SI0220**



**LT**



**HL**



**DK**

**300X600mm**

[www.amos.in](http://www.amos.in)





SI0225



LT



HL



DK

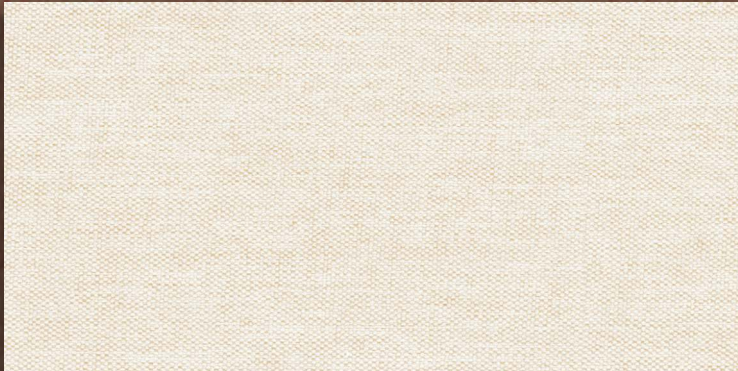
300X600mm



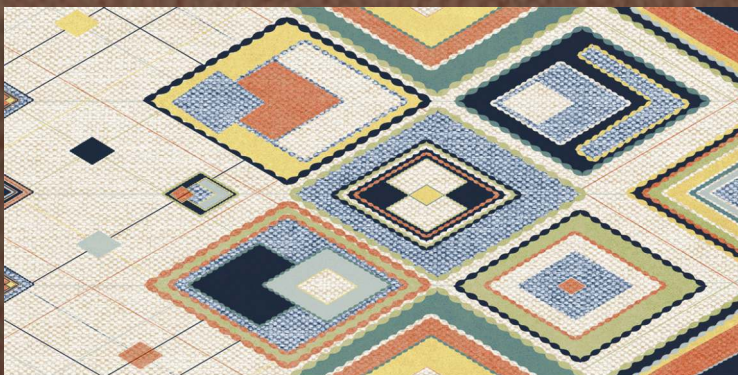
# RAMOS®

ENHANCING TOMORROW

SI0232



LT



HL



DK

300X600mm

[www.amos.in](http://www.amos.in)



# RAMOS®

ENHANCING TOMORROW

SI0261



LT



HL



DK

300X600mm

[www.amos.in](http://www.amos.in)



**SI0262**



**LT**



**HL**

—  
**300X600mm**





# RAMOS®

— ENHANCING TOMORROW

SI0265



LT



HL



DK

---

300X600mm

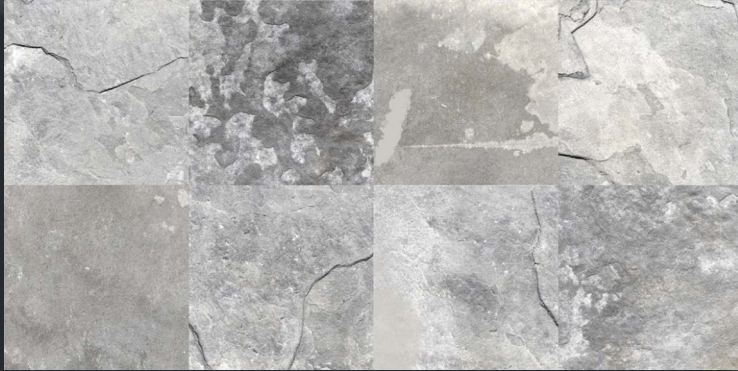
[www.amos.in](http://www.amos.in)



# RAMOS®

— ENHANCING TOMORROW

SI0295



LT



HL



DK

300X600mm

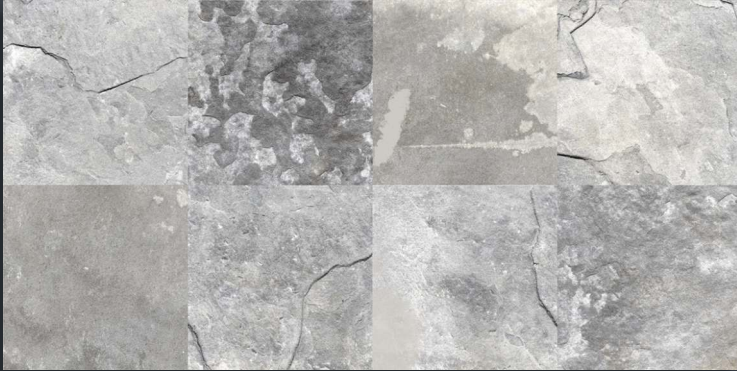
[www.amos.in](http://www.amos.in)



# RAMOS®

— ENHANCING TOMORROW

**SI0295**



**LT**



**HL02**



**DK**

**300X600mm**

[www.amos.in](http://www.amos.in)



**RAMOS®**  
ENHANCING TOMORROW

**RAMOS CERAMICS PVT. LTD.**

**MANUFACTURER & EXPORTER OF  
DIGITAL CERAMIC WALL TILES**

Survey No. 149 1/2, Opp. Sartanpar Village, Sartanpar Road,  
Wankaner – 363622, Dist. – Morbi (Gujarat), INDIA.

Phone: +91 97277 70191 | Export: +91 97277 70266  
Marketing: +91 95860 77777 | +91 97277 70233

info@ramos.in | export@ramos.in

**www.ramos.in**